

# MCI-XPC3000 - xPortal3000

## Multi Function Access Control System



### Product Description

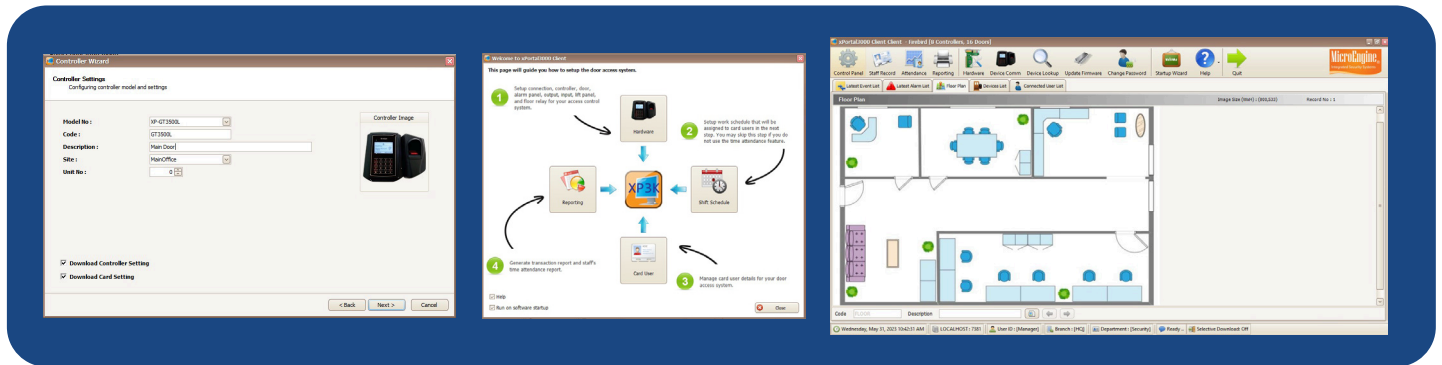
MicroEngine xPortal3000 software is an access control and security management system designed to provide comprehensive and flexible control over access to buildings and facilities. The software offers a range of features and functionalities, including the ability to manage and monitor multiple doors, control and customize access levels for individual users, and generate detailed activity and attendance reports. The xPortal3000 software supports multiple types of access tokens, including MIFARE card, ID, DES-Fire DFM and fingerprint biometrics. It also includes a user-friendly interface that allows for easy setup, management, and monitoring of the system.

### Product Features

- **Support Up to 128 Doors**  
The system can monitor up to 128 doors in real-time and has a user-friendly graphical interface. It displays floor plans with dynamic icons that show the status of monitored devices, and users can click on the icons to execute commands easily.
- **DESFire DFM**  
DESFire on M series controller (DFM) solution is designed to enhance security and prevent hacking and cloning issues. MicroEngine uses DESFire EV2 cards for encoding and employs AES 128-bit encryption to provide advanced security for confidential data.
- **Built-in time Attendance**  
The shift configuration is designed for small offices and includes a Shift Setup Wizard. Users can rebuild time attendance based on a schedule and export the data to a configurable destination. It also offers a variety of time

attendance reports and the ability to export raw transaction data to third-party HR systems for a complete solution

- **Built-in time Attendance**  
The shift configuration is designed for small offices and includes a Shift Setup Wizard. Users can rebuild time attendance based on a schedule and export the data to a configurable destination. It also offers a variety of time attendance reports and the ability to export raw transaction data to third-party HR systems for a complete solution.
- **Support Multi-Language**  
With multi-language support, users can easily navigate the software in their preferred language, improving their overall experience and productivity.
- **Reliable Database**  
Utilises Firebird as the Database Management System (DBMS) due to its robustness, scalability and cost-effectiveness.



## Product Specification

No.	Features	Free	xPortal3000/S	xPortal3000
1	Operating System	Windows 7, 8, 10, and 11 (Home & Starter Editions Not Supported) Windows Server 2008, 2012, 2019 and 2022 (requires Microsoft .Net Framework v3.5)		
2	Max No. of Controllers / Doors	8 / 16	32 / 64	64 / 128
3	Controller Supported	XP-M1000i v2, XP-M1000X, XP-M1300i, XP-M1300i/IP, XP-M1000i-SE21, XP-M2000i, XP-M2300i, XP-M2300i/IP, XP-GT3500L, XP-GT3500ABL, XP-GT10KL, XP-GT10KABL, XP-GTR1500L, XP-GTR1500ABL, XP-GT3200L, XP-GT3200LE, XP-GT3200LCPX, XP-GT1200L, XP-GT1200LE, XP-GT1200LCPX, XP-GTR1200, XP-GTR1200LE, XP-GTR1200LCPX		
4	Communication Link to PC	Serial RS485 or IP		
5	Wizard-Based Configuration	Quick Start Guide, Add New Controller, Shift Configuration		
6	Server as Window Service	Yes		
7	Card Holder	1,000	10,000	10,000
8	Import Card Holder Records	Support .txt, .csv, .xls, .xlsx. Import options include add, update, and delete		
9	Card Holder Centric View	No	No	Yes
10	Multi-Workstation	No	No	Yes – Max 3
11	Selective Download	No	No	Yes
12	Time Set & Time Zone	255		
13	Holiday Dates	30		
14	Door Access Levels	255		
15	Anti-Passback	Yes		
16	Database	FireBird		
17	Multi-Database (Simplify Multi-Site Management)	No	No	Yes
18	Scheduled Backup	No	No	Yes
19	Transaction Records	Limited by Disk Space		
20	Automatic Transaction Retrieval	Yes		
21	Real-time Transaction Export	Yes - Configurable Export Format and Destination		
22	Location Tracking	Yes - Card Holders' Last Location Report, Who's Still In Report (Multiple Door Selection)		
23	Online Events Viewing	Yes		
24	Online Events Shortcut - Provide Quick Access to Perform Relevant Operations to Event	No	No	Yes
25	Dynamic Floor Plan	Yes (Online Devices' Status, Interactive Device Control, Map Link)		

## Data Sheet | Software

No.	Features	Free	xPortal3000/S	xPortal3000
26	Floor Plan Thumbnail - Easy Navigation	No	No	Yes
27	Advanced Floor Plan Icon Setting	No	No	Yes (Can Resize, Rotate & Change Label Position)
28	System User	Use Default Only	Can Add New System User	Can Add New System User
29	System User Menu Access Setting	No	Yes	Yes
30	Language Selection by System User	No	Yes	Yes
31	Daily Attendance Reporting	Yes - Simple Single Day Daily Mode Late-in, Absent, Total work time, OT, Flexi Hour		
32	Monthly Attendance Reporting	Yes - Summary of Attendance Status		
33	Scheduled Attendance Rebuild	No	No	Yes
34	Export Time Attendance	Yes - Configurable Format and Destination		

## Computer Requirements

No.	Features	Features
1	CPU (Recommended)	Intel Core i5-10400 or higher
2	RAM (Minimum)	4 GB (8 GB Recommended)
3	Operating System	Microsoft Windows 7, 8, 10, 11 (Home & Starter Editions Not Supported) Microsoft Windows Server 2008, 2012, 2019, 2022
4	Microsoft.Net Framework	Yes (Version 3.5)
5	Ethernet	Yes
6	USB Port	Optional – Required for USB Dongle, USB to RS232 serial port converter
7	Hard Disk (Free Space)	50 GB

## Related Product

- ▶ XP-M1000i v2
- ▶ XP-M1000X
- ▶ XP-M1300i
- ▶ XP-M1300i/IP
- ▶ XP-M1000i-SE21
- ▶ XP-M2000i
- ▶ XP-M2300i
- ▶ XP-M2300i/IP
- ▶ PLATO-P80MS
- ▶ PLATO-P80KLS
- ▶ PLATO-S82
- ▶ PLATO-M82
- ▶ PLATO-K82
- ▶ XP-GTR1500L
- ▶ XP-GTR1500LABX
- ▶ XP-GT3500L
- ▶ XP-GT3500LABX
- ▶ XP-GT10KL
- ▶ XP-GT10KLABX
- ▶ XP-GT3200L
- ▶ XP-GT3200LE
- ▶ XP-GT3200LCPX
- ▶ XP-GT1200L
- ▶ XP-GT1200LE
- ▶ XP-GT1200LCPX
- ▶ XP-GTR1200
- ▶ XP-GTR1200LE
- ▶ XP-GTR1200LCPX

## Ordering Information

### MCI-XPC3000/s

Standalone Software License Dongle xPortal3000

### MCI-XPC3000

xPortal3000 Client / Server Software License

### XP-M1300i/IP

1 Door Network Controller. Max 2 RS485, In & Out Readers / 2 Weigand Reader Connection. 2 Relay Outputs & 6 Inputs. 30,000 Users, 50,000 Event Transactions. TCP/IP. Power Supply & Back Up Battery with Metal Enclosure.

### XP-M1000i-SE21

1 Door Network Controller. Max 2 RS485, In & Out Readers Connection. 1 Relay Output & 4 Inputs. 10,000 Users, 50,000 Event Transactions. TCP/IP. Power Supply & Back Up Battery with Metal Enclosure.

### XP-M2300i/IP

2 Door Network Controller. Max 4 RS485, 2 In & 2 Out Readers / 2 Weigand Reader Connection. 4 Relay Outputs & 11 Inputs .30,000 Users, 50,000 Event Transactions. TCP/IP. Power Supply & Back Up Battery with Metal Enclosure.

## Data Sheet | Software

---

**PLATO-P80MS**

Proximity Reader. 125 kHz EM. RS485. ABS Casing. MCMC Certified.

---

**PLATO-P80KLS**

Proximity Reader with Keypad & LCD. 125 kHz EM. RS485. Smart Touch Sense Keypad. Graphic LCD Display. ABS Casing. MCMC Certified.

---

**PLATO-S82**

MIFARE / CEPAS Contactless Reader. 13.56 MHz ISO14443A / B. RS485. ABS Casing. Small Size. MCMC Certified. (Replacement Model for PLATO-C80S).

---

**PLATO-M82**

MIFARE Classic / DESFire Advanced High Security Multi-Format 13.56 MHz ISO14443A / B. Encrypted RS485 - Read CSN and Encrypted Profile ID. ABS Casing. MCMC Certified. (Replacement Model for PLATO-RM80MS).

---

**PLATO-K82**

MIFARE Classic / DESFire Advanced High Security Multi-Format 13.56 MHz ISO14443A / B. Color Graphics LCD. Touch Sense Keypad. Encrypted RS485 - Read CSN and Encrypted Profile ID. ABS Casing. MCMC Certified. (Replacement Model for PLATO-RM80KLS).

---

**XP-GTR1500L**

Proximity Reader with Capsense Keypad and LCD and built-in single door controller with direct TCP/IP LAN. 1,500 users, 10,000 event transactions.

---

**XP-GTR1500LABX**

MIFARE / ISO14443A / B Serial No Reader with Capsense Keypad and LCD and built-in single door controller with direct TCP/IP LAN. 1,500 users, 10,000 event transactions.

---

**XP-GT3500L**

Proximity Reader with FingerPrint Reader with Colour LCD and Keypad reader and built-in controller with direct TCP/IP LAN. 3,500 users, 20,000 event transactions.

---

**XP-GT3500LABX**

MIFARE / ISO14443A / B Serial No Reader with FingerPrint Reader with Colour LCD and Keypad reader and built-in controller with direct . 3,500 users, 20,000 event transactions TCP/IP LAN.

---

**XP-GT10KL**

Single Door Proximity Fingerprint Reader with Direct TCP/IP LAN Support up To 10K Fingerprint Templates.

---

**XP-GT10KLABX**

Single Door MIFARE Fingerprint Reader with Direct TCP/IP LAN Support up To 10K Fingerprint Templates.

---